

LIQUIDATION SALE BY

# PUBLIC AUCTION

## FURNITURE MANUFACTURER

- WOODWORKING MACHINERY •
- TOOLS • SEWING MACHINES • SUPPORT EQUIPMENT •
- TRUCKS • FORKLIFT • TRAILER •
- ±\$150,000.00 WHOLESALE INVENTORY •
- HARDWOOD FURNITURE •



50 WAREHOUSE STREET SPRINGFIELD, MASSACHUSETTS

TO BE SOLD ON THE PREMISES AND BY LIVE INTERNET BIDDING

**THURSDAY, FEBRUARY 7<sup>TH</sup> AT 11:00 A.M.**

**INSPECTION: WEDNESDAY, FEBRUARY 6<sup>TH</sup> – 10:00 A.M. TO 4:00 P.M. & MORNING OF SALE – 8:30 A.M TO 11:00 A.M.**



**LOBO TENONER**



**DETEL BORING MACHINE**

**1 OF 2**

**Aaron Posnik**

**AUCTIONEERS • APPRAISERS**

Aaron Posnik & Co., Inc.  
83 State Street • Springfield, MA 01103  
(413) 733-5238 (Fax) 731-5946

MA Auc. Lic. #161 • Est. 1932 • PA Auc. Lic. #AY000241L  
Toll Free 1-877-POSNIK-1 (767-6451)

Aaron Posnik & Co., Inc.  
P.O. Box 247 • Malvern, (Philadelphia) PA 19003  
(610) 853-6655 (Fax) 853-6633

LIQUIDATION SALE BY  
**PUBLIC AUCTION**



**50 WAREHOUSE STREET SPRINGFIELD, MASSACHUSETTS**  
**TO BE SOLD ON THE PREMISES AND BY LIVE INTERNET BIDDING**  
**THURSDAY, FEBRUARY 7<sup>TH</sup> AT 11:00 A.M.**

**INSPECTION: WEDNESDAY, FEBRUARY 6<sup>TH</sup> – 10:00 A.M. TO 4:00 P.M.**  
**& MORNING OF SALE – 8:30 A.M. TO 11:00 A.M.**

**AIRPORT:**

**BRADLEY INT'L AIRPORT (BDL) – APPROX. 20 MILES TO SITE**  
 11 SCHOEPHOESTER ROAD, WINDSOR LOCKS, CT 1-860-292-2000

**DIRECTIONS:**

**FROM BRADLEY INT'L AIRPORT – TAKE I-91 N TOWARD SPRINGFIELD**  
 (CROSSING INTO MASS.). APPROX. 13.7 MILES. TAKE THE RT-83 S EXIT 2,  
 TOWARD FOREST PARK/E. LONGMEADOW. APPROX. 0.1 MILE. STAY STRAIGHT  
 TO GO ONTO RT-83 E. APPROX. 0.5 MILE. TURN RIGHT ONTO SUMNER AVE/  
 RT-21/RT-83. CONTINUE TO FOLLOW SUMNER AVE/RT-21. APPROX. 1.4 MILE.  
 TURN LEFT ONTO WHITE ST. APPROX. 0.09 MILE. TAKE THE 1ST RIGHT ONTO  
 KIMBERLY AVE. APPROX. 0.3 MILE. TURN RIGHT ONTO ALLEN ST. APPROX.  
 0.03 MILE.. TURN LEFT ONTO ISLAND POND RD. APPROX. 0.1 MILE. TURN  
 LEFT ONTO WAREHOUSE ST. APPROX. 0.2 MILE. (WATCH FOR AUCTION SIGNS)

**HOTELS:**

**HILTON GARDEN INN – 1-413-886-8000**  
 800 HALL OF FAME AVENUE, SPRINGFIELD, MA  
**SHERATON – 1-413-781-1010**  
 ONE MONARCH PLACE, SPRINGFIELD, MA  
**MARRIOTT HOTEL – 1-413-781-7111**  
 1500 MAIN STREET, SPRINGFIELD, MA

**TERMS & CONDITIONS:**

**EVERYTHING SOLD "AS IS/WHERE IS"**

**TERMS OF SALE:**

25% DEPOSIT AT TIME OF SALE BY CASH, CERTIFIED OR BANK CHECK, OR  
 BANK WIRE TRANSFER. 12% BUYERS PREMIUM APPLIES ON ALL ONSITE  
 PURCHASES. 12% BUYERS PREMIUM APPLIES ON ALL INTERNET PURCHASES.  
 PERSONAL OR COMPANY CHECK ACCEPTED ONLY IF ACCOMPANIED WITH  
 A BANK LETTER GUARANTEEING PAYMENT. EXAMPLE OF BANK LETTER OF  
 GUARANTEE: THIS BANK GUARANTEES PAYMENT TO AARON POSNIK & CO.,  
 INC. ON ACCOUNT # \_\_\_\_\_ UP TO THE AMOUNT OF \$ \_\_\_\_\_ FOR PURCHASES  
 MADE AT THE RIVERBEND FURNITURE AUCTION TO BE HELD ON THURSDAY,  
 FEBRUARY 7<sup>TH</sup>. NO PURCHASE REMOVED UNTIL COMPLETE SETTLEMENT IS  
 MADE. OTHER TERMS TO BE ANNOUNCED AT TIME OF SALE.

**SALES TAX:**

MASSACHUSETTS SALES TAX LAWS APPLY.  
 DEALERS BRING COPY OF EXEMPT CERTIFICATE.

**BID LIVE BY INTERNET:**

VISIT OUR WEBSITE AT POSNIK.COM OR BIDSPOTTER.COM FOR INSTRUCTIONS  
 ON BIDDING ONLINE.

**BID LIVE BY PHONE:**

CALL US BY MONDAY, FEBRUARY 4TH TO SET UP THE DETAILS.

**BID BY MAIL:**

IF YOU CANNOT ATTEND THIS AUCTION IN PERSON WE WILL BE HAPPY TO  
 RECEIVE YOUR BID ON THE ITEMS THAT YOU DESIGNATE (IF YOUR BID IS SENT  
 BY MAIL OR FAX AND RECEIVED BY OUR OFFICE AT LEAST 24 HOURS PRIOR TO  
 THE COMMENCEMENT OF THE SALE). IF YOU WISH TO BID BY MAIL, KINDLY  
 PROVIDE A COMPLETE LIST OF THE ITEMS DESIRED AND ENCLOSE A 25%  
 DEPOSIT BY CERTIFIED CHECK. YOU WILL BE RESPONSIBLE FOR PURCHASES  
 IF YOU ARE THE HIGH BIDDER, UNDER THE TERMS AND CONDITIONS TO BE  
 ANNOUNCED AT TIME OF SALE. IF YOU ARE THE SUCCESSFUL BIDDER, WE  
 WILL NOTIFY YOU WITHIN 24 HOURS OF THE SALE AND YOU MUST MAKE  
 PAYMENT OF THE BALANCE DUE BY WIRE TRANSFER TO OUR BANK WITHIN 24  
 HOURS OF NOTIFICATION. IF YOU ARE UNSUCCESSFUL IN YOUR BID, YOUR  
 DEPOSIT WILL BE RETURNED TO YOU WITHIN 72 HOURS OF THE SALE.

**IMPORTANT NOTICE:**

THE INFORMATION DESCRIBED IN THIS BROCHURE IS CORRECT TO THE BEST  
 OF OUR KNOWLEDGE BUT WE CANNOT GUARANTEE SAME. IT IS FOR THIS  
 REASON THAT BUYERS SHOULD AVAIL THEMSELVES OF THE OPPORTUNITY  
 FOR INSPECTION PRIOR TO THE SALE.



SCMI WIDE BELT SANDER



LOBO WIDE BELT SANDER



ONSRUD ROUTER



RITTER BORING MACHINE



1 OF 2

DELTA PLANER



1 OF 2

DELTA BANDSAW



WARDROBES

**Aaron Posnik**  
**AUCTIONEERS • APPRAISERS**

# THURSDAY, FEBRUARY 7<sup>TH</sup> AT 11:00 A.M.



LAZZARI TEMA SLIDING TABLE  
PANEL SAW



SAMCO SLIDING TABLE PANEL SAW



GENERAL TABLE SAW



DELTA JOINTER

## BORING MACHINES

- **Detel** 29 Position Horiz./Vert. Dowel Hole Borer, 4 HP, 3 Ph., Mod. M-29 (2004) •
- **Detel** 29 Position Horiz./Vert. Dowel Hole Borer, 4 HP, 3 Ph., (1998) •
- **Ritter** 24 Position Horiz. Construction Borer, 3 Ph., Mod. R803 •
- **Ritter** 23 Position Vert. Line Borer, 3 HP, 3 Ph. •
- **Kreg** Pneu. Pocket Borer, 21" x 44" Table •

## SANDERS

- **Lobo** 36" Single Head Wide Belt, Mod. A-3760 (2000) •
- **Scmi Uno** Mini Max 36" Wide Belt Sander, 3 Ph., Mod. UNO-CS •
- **Festool Cleanmatic** 2-Head Port. Pneu. Sander, 1 Ph., Mod. CT33E •
- **Vega** 6" X 60" Edge Sander, 2 HP, 1 Ph., Mod. E •
- Vertical 8" Oscillating Sander, 1 Ph. •

## PANEL SAWS

- **Lazzari Tema** 2500IS Sliding Table Panel Saw, 3 Ph., S/N 9602215 •
- **Samco** Mini Max Sliding Table Panel Saw, 7½ HP, 3 Ph., Mod. S300W •

## TABLE SAWS

- **General** 10" Table Saw, 30" x 44" Table, 3 Ph., Mod. 450 w/ Holz. 3 Roll Feeder, Mod. 1985-383 •
- **Jet** 12" Table Saw, 34" x 44" Table & Sliding Table Ext. 3 HP, 3 Ph., Mod. CTAS-12H-1 w/ Maggi 3 Roll Feeder, Mod. Steff 2034 •
- **Delta** 10" Unisaw, 27" x 36" Table, 1 Ph., Mod. 36.812 •
- **Delta** 10" Unisaw, 27" x 27" Table, 1 Ph., Mod. 34.7615 •
- **Craftsman** 10" Table Saw, 27" x 40" Table, Tilt Arbor, 1 Ph. •

## BANDSAWS

- (2) **Delta** 19" Vertical Bandsaws, 21" x 21" Table, 2 HP, 1 Ph., Mod. 28-640 •
- **General** 15" Vertical Bandsaw 15" x 15" Table, 1 Ph., Mod. 490 •
- **Craftsman** 12" Vertical Bandsaw 14" x 22" Table, 1 Ph. •

## RADIAL ARM SAWS

- **B&D Deluxe** Power Shop 10" Rad. Arm Saw, 1 Ph., Mod. 7740 •
- **Rockwell** 10" Rad. Arm Saw, 1 Ph., S/N 33-267 •
- **Craftsman** 10" Rad. Arm Saw, 1 Ph., Mod. 113199200 •
- **Dewalt** 10" Contractors Rad. Arm Saw, 3½ HP, 1 Ph. •

## DUST COLLECTORS

- **Dust Tech** 6 Bag, 10 HP, Mod. DT-100 •
- **Dust Tech** 6 Bag, 7½ HP, Mod. DT 7.5 •
- **Torit** 8 Bag, 3 Ph, Mod. 30 •

## PAINT BOOTH

- **Col-Met** 8' x 8' x 8'6" Port. Paint Spray Booth w/ Exhaust •

## SUPPORT EQUIPMENT

- **Bolens** 6 Speed Gas Lawn Tractor •
- **Speedaire** Vert. Air Compressor, 5 HP, 1 Ph. •
- **Presto** Man. Stacker 1000# Cap., Mod. M266 •
- (6) Hyd. Pallet Jacks • Hand & Appliance Trucks •
- 8' Port. Stock Ladder • Stepladder • Stapping Mach. •
- **Jiffy** Port. Steamer • (7) Pedestal Shop Fans •
- Shop Vac's • Stock Carts • Platform Trucks •
- (5) 2D Flameproof Cabinets • (30) Wood Set-up Tables •
- (20) Sections 10' x 10' x 3' H.D. Pallet Racking •
- Ass't. **Makita**, **Porter Cable**, **Dewalt**, **B&D** & **Skill** Power Tools Including: Routers, Drills, Sanders, Miter Saws, Etc. •
- (13) **Duo-Fast** & **Paslode** Pneu. Nailers •
- (70) Bar Clamps 2'-8" Wood Clamps •
- Hand Tools • Shelving • Work Tables • Etc. • Etc. •

## Office Equipment Including:

- **Canon Imageclass D680** Copier/Fax • 1D Port. Comb. Safe •
- File Cabinets • Desks • Chairs • Etc. • Etc. •

## TENONER

- **Lobo** Single Head - 2 Station Horizontal Tenoning Mach., 3 Phase, Mod. CI-K6 •

## MORTISER

- **Powermatic**, Gold Series, 3 Ph., Mod. 719A •

## ROUTER

- **Onsrud** Inverted Overhead Pin Router, 36" Throat 30" x 48" Table, 3 Ph., Mod. 36210, S/N 36020807 (2002) •

## DOVETAIL MACHINE

- **Dovetailer** 19 Position - 20", 1½ HP, 1 Ph. •

## PLANERS

- (2) **Delta** 24" Planers, 3 Ph., Mod. 22610 •

## JOINTERS

- **Lobo** 8" Jointer, 1 Ph. • **Delta** 6" Jointer, 1 Ph., Mod. DJ-20 •
- **Delta** 6" Jointer, 1 Ph., Mod. 52-672 •
- **Bridgewood** 8" Jointer, 1 Ph. •

## SHAPERS

- **Delta X5** Shaper, 18" x 27" Table, 1 Ph., Mod. 43-431X w/ Delta 3 Roll Feeder, # 36-836 •
- **Rockwell** Wood Shaper, 18" x 18" Table, 1 HP, 1 Ph., # 43-122 •
- Custom Shaper, 1 PH. w/ 48" Table •

## DRILL PRESSES

- (2) **Powermatic** 18" Pedestal Drill Presses, 1 HP, 1 Ph., Mod. 2800 •
- **Delta** 17" Pedestal Drill Press, ¾ HP, 1 Ph., Mod. 17-900 •
- (2) **Craftsman** 15" Pedestal Drill Presses, ½ HP, 1 Ph., Mod. 113 •

## CLAMPING MACHINES

- (3) **Jet** 5 Tier 8" Panel Clamps, Mod. 79F-8-PC •
- (2) **Jet** 6 Tier 6" Panel Clamps, Panel Lamps •
- (1) **Jet** 28" Glue Dispenser •

## SEWING MACHINES

- **Juki LU-563N** Ind. Sewing Mach. w/ Table, Motor & Stand •
- **Consew SW9503038** Ind. Sewing Mach. w/ Table, Motor & Stand •
- **Singer 212U141A** Twin Needle Sewing Mach. w/ Table, Motor & Stand •
- **Consew 255RB-1** Long Arm Ind. Sewing Mach. w/ Table, Motor & Stand •
- **Consew 206RB-2** Ind. Sewing Mach. w/ Table, Motor & Stand •
- **Rex 618-2** Ind. Blindstitch Sewing Mach. w/ Table, Motor & Stand •

## FORKLIFT

- **Crown Elec.**, 3500# Cap. 152" Lift HT., Side Shifter, Solid Tires, ROPS, Mod. 35SCTT-S (12,670 Hours) w/ Charger •

## TRUCKS

- **2002 Isuzu NPR** Turbo Diesel 16' Box Truck, Dual Wheels, AT, AM/FM Radio, (164,700 Miles) •
- **1999 GMC C6500** Diesel 24' Box Truck, AC, 6 Sp. Man Trans., Dual Wheels, (174,000 Miles) •

## TRAILER

- **1985 Fruehauf** 45', T/A Trailer Van, Swing Doors •

## INVENTORY

- **±\$150,000.00 Hardware Furniture Inventory** Consisting of: Oak, Ash, & Maple Dining Room Tables & Chairs •
- Bow Back, Armless & Arm Chairs •
- Entertainment & TV Cabinets • Bunk & Captain Beds •
- Dressers • Chests • Nightstands • Wardrobes •
- Bookcases • File Cabinets • Pedestal Desks •
- Study Tables • Etc. • Etc. •
- Gd. Qty. Work-In-Process Including: Table, Cabinet & Desk Tops • Table Legs • Drawers • Bedsprings • Fasteners • Hardware • Plywood • Etc. • Etc. •
- Gd. Qty. Upholstery Fabric & Foam •
- (200) Wood Skids • Etc. • Etc. •



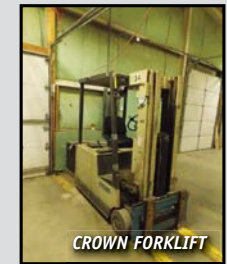
DELTA SHAPER



POWERMATIC  
MORTISER



DOVETAIL MACHINE



CROWN FORKLIFT



## HARDWOOD FURNITURE INVENTORY

**Aaron Posnik**

AUCTIONEERS • APPRAISERS

# PUBLIC AUCTION

## FURNITURE MANUFACTURER

- WOODWORKING MACHINERY •
- TOOLS • SEWING MACHINES • SUPPORT EQUIPMENT •
- TRUCKS • FORKLIFT • TRAILER •
- ±\$150,000.00 WHOLESALE INVENTORY •
- HARDWOOD FURNITURE •



50 WAREHOUSE STREET  
SPRINGFIELD, MASSACHUSETTS

TO BE SOLD ON THE PREMISES AND BY LIVE INTERNET BIDDING

**THURSDAY, FEBRUARY 7<sup>TH</sup> AT 11:00 A.M.**

SALE PER ORDER OF RIVERBEND FURNITURE  
PLANT CLOSED – MUST VACATE PREMISES

**TERMS OF SALE:** 25% DEPOSIT CASH OR CERTIFIED CHECK  
12% BUYERS PREMIUM APPLIES ON ALL ONSITE PURCHASES  
12% BUYERS PREMIUM APPLIES ON ALL INTERNET PURCHASES  
OTHER TERMS TO BE ANNOUNCED AT TIME OF SALE  
**INSPECTION:** WEDNESDAY, FEBRUARY 6<sup>TH</sup> – 10:00 A.M. TO 4:00 P.M.  
& MORNING OF SALE – 8:30 A.M TO 11:00 A.M.



MA Auc. Lic. #161  
PA Auc. Lic. #AY000241L  
Est. 1932

Visit our Website @ [www.posnik.com](http://www.posnik.com)  
Toll Free 1-877-POSNIK-1 (767-6451)

Aaron Posnik & Co., Inc.  
83 State Street • Springfield, MA 01103  
(413) 733-5238 (Fax) 731-5946

Aaron Posnik & Co., Inc.  
83 State Street  
Springfield, MA 01103

RETURN SERVICE REQUESTED

Presorted  
First Class Mail  
U.S. POSTAGE  
PAID  
Permit No. 12  
Springfield, MA

**LIVE ONSITE & LIVE INTERNET  
BIDDING AVAILABLE**

Aaron Posnik & Co., Inc.  
P.O. Box 247 • Malvern, (Philadelphia) PA 19003  
(610) 853-6655 (Fax) 853-6633

# THURSDAY, FEBRUARY 7<sup>TH</sup> AT 11:00 A.M.

## 50 WAREHOUSE STREET, SPRINGFIELD, MASSACHUSETTS

### BID FROM THE COMFORT OF YOUR OFFICE!!!

If you can't personally attend the auction sale, you don't have to miss out on the bidding. You can bid on the equipment in the following ways:

- **LIVE PHONE BID:** Call us by **FEBRUARY 4<sup>TH</sup>** to set up the details\*
- **INTERNET BID:** Visit [www.posnik.com](http://www.posnik.com) or [bidspotter.com](http://bidspotter.com) to register online.\*
- **PROXY BID:** Call us and we'll be happy to send you a proxy bid form. Fill it out, fax it back and we'll bid on your lot for you.\*

**\*We must receive a 25% deposit of all proxy and phone bids before the auction to secure your bid. No credit cards.**

To Bid Online Visit:  
[www.posnik.com](http://www.posnik.com) or  
[www.bidspotter.com](http://www.bidspotter.com)

Webcasts Powered by



**12% BUYERS PREMIUM APPLIES ON ALL ONSITE PURCHASES**  
**12% BUYERS PREMIUM APPLIES ON ALL INTERNET BIDDERS**



LAZZARI TEMA SLIDING TABLE PANEL SAW



SAMCO SLIDING TABLE PANEL SAW



Aaron Posnik & Co., Inc.  
83 State Street • Springfield, MA 01103  
(413) 733-5238 (Fax) 731-5946

MA Auc. Lic. #161 • Est. 1932 • PA Auc. Lic. #AY000241L  
Toll Free 1-877-POSNIK-1 (767-6451)

Aaron Posnik & Co., Inc.  
P.O. Box 247 • Malvern, (Philadelphia) PA 19003  
(610) 853-6655 (Fax) 853-6633